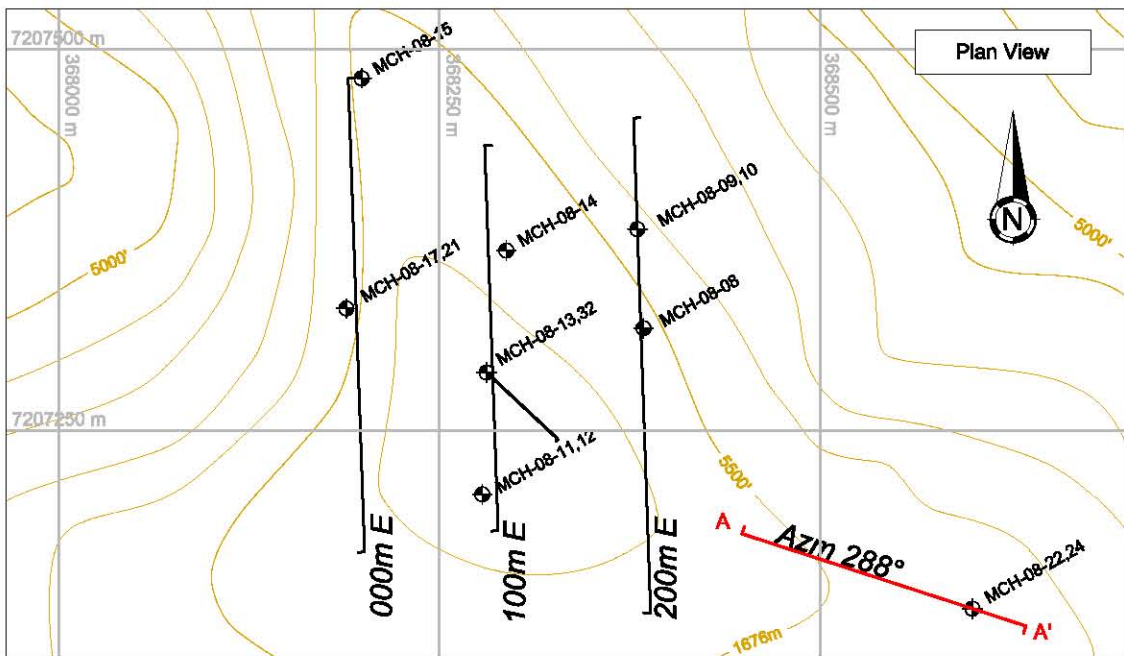
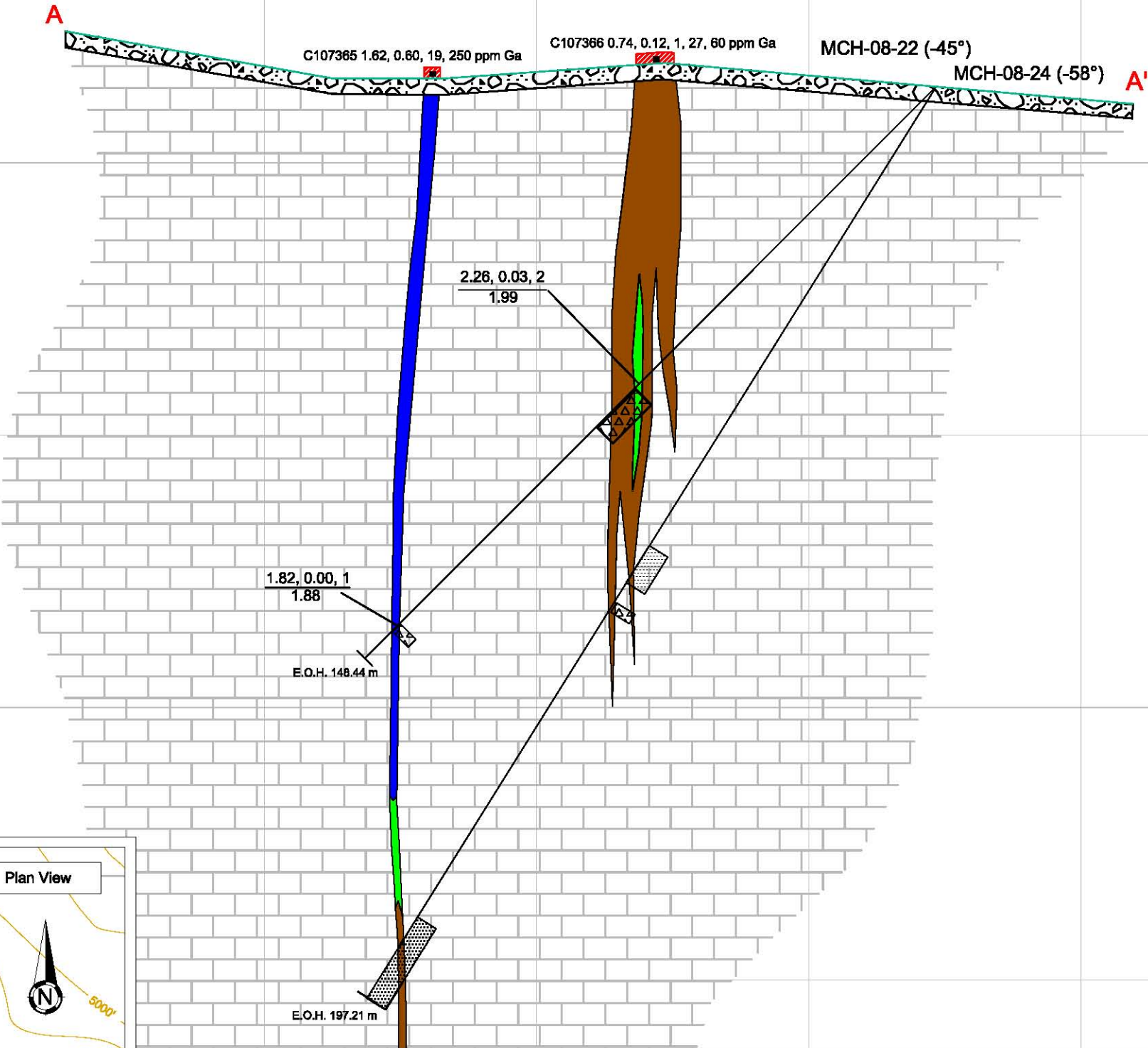


SECTION FACING NORTHERLY

1650 m  
1600 m  
1550 m



Bouvette Formation dolostone	Breccia	<table border="0"><tr><th>Zn %, Pb %, Ag (g/t)</th><th>Weighted average grade and interval width</th></tr><tr><td></td><td>≥ 8.00% Zn + Pb</td></tr><tr><td></td><td>≥ 4.00 &lt; 8.00% Zn + Pb</td></tr><tr><td></td><td>≥ 2.00 &lt; 4.00% Zn + Pb</td></tr><tr><td></td><td>≥ 1.00 &lt; 2.00% Zn + Pb</td></tr><tr><td></td><td>Weakly elevated iron (&gt;1%)</td></tr></table>	Zn %, Pb %, Ag (g/t)	Weighted average grade and interval width		≥ 8.00% Zn + Pb		≥ 4.00 < 8.00% Zn + Pb		≥ 2.00 < 4.00% Zn + Pb		≥ 1.00 < 2.00% Zn + Pb		Weakly elevated iron (>1%)
Zn %, Pb %, Ag (g/t)	Weighted average grade and interval width													
	≥ 8.00% Zn + Pb													
	≥ 4.00 < 8.00% Zn + Pb													
	≥ 2.00 < 4.00% Zn + Pb													
	≥ 1.00 < 2.00% Zn + Pb													
	Weakly elevated iron (>1%)													
Quartet (Gillespie Lake?) Group siltstone	Sanded dolostone													
Drill hole with angle	Crackle breccia													
Inferred bedding attitude	Mineralized talus													
Geological contact	Mineralized outcrop													
Fault (with relative displacement directions)	Overburden													
Soil sample location (sample number, Zn %, Pb %, Ag g/t)	Rock sample location (sample number, Zn %, Pb %, Ag g/t)													

**ZINCCORP RESOURCES INC.**

FIGURE 36

ARCHER, CATHRO & ASSOCIATES (1981) LIMITED

**MCH-08-22 & -24 SECTION**

**MICHELLE PROPERTY**

Scale 1:1000 1H=1V

0 m 25 50 75

DRAWN / REVISED BY: M. Kammerer	PROJECT: MICHELLE
FILE:2008/MICHELLE/Drafting/MCH_Peak_Sections.dwg	DATE: MARCH 2009